

# HONEST ABE *Living*

## Carolina Blue Ridge Retreat

**Honest Abe Featured  
in Parade of Homes  
Dealers Meet for  
Summer Conference  
American-Made Pine Flooring**





# Our People



Darlene Dawson and Steve Wallin, HA dealers in N.C., created the mountain retreat featured on p. 4.



Since 1987 Jimmy Scott has taken pride in his work at the Honest Abe manufacturing plant.



HA team members Jackie Cherry, Bobby Collins and Ed White explain how a home is built at a Log Raising event.

# HONEST ABE *Living*

July-August 2014

## In this issue...

- Home with a View, p. 4*
- Cooking with Lodge, p. 6*
- American-made Flooring, p. 7*
- Honest Abe on Parade of Homes, p. 8*
- Independent Dealers Meet, p. 10*
- Getting Crafty with the Smiths, p. 11*



Honest Abe Living is edited, designed & composed by Claudia Johnson, Director of Marketing.



**Facebook** – Like us on our Facebook fan page and join the growing community.



**Vimeo** – Watch our videos and share yours with us.



**Pinterest** – Make your board more beautiful by pinning Honest Abe pictures.



**Google+** – Join the Honest Abe circle for photos, news, ideas and more.



**Twitter** – Articles, resources, photo galleries and log home news, all shared here first.



**YouTube** – Watch and learn about log and timber frame homes on our YouTube station.



**LinkedIn** – Follow company and log home industry news on our LinkedIn company profile page.



Find **Honest Abe Living** articles, stunning photography and more information at the Honest Abe Log Homes blog and news room.

[blog.honestabe.com](http://blog.honestabe.com)



View our photo library at [honestabeloghomes.zenfolio.com](http://honestabeloghomes.zenfolio.com)



# A home with a view

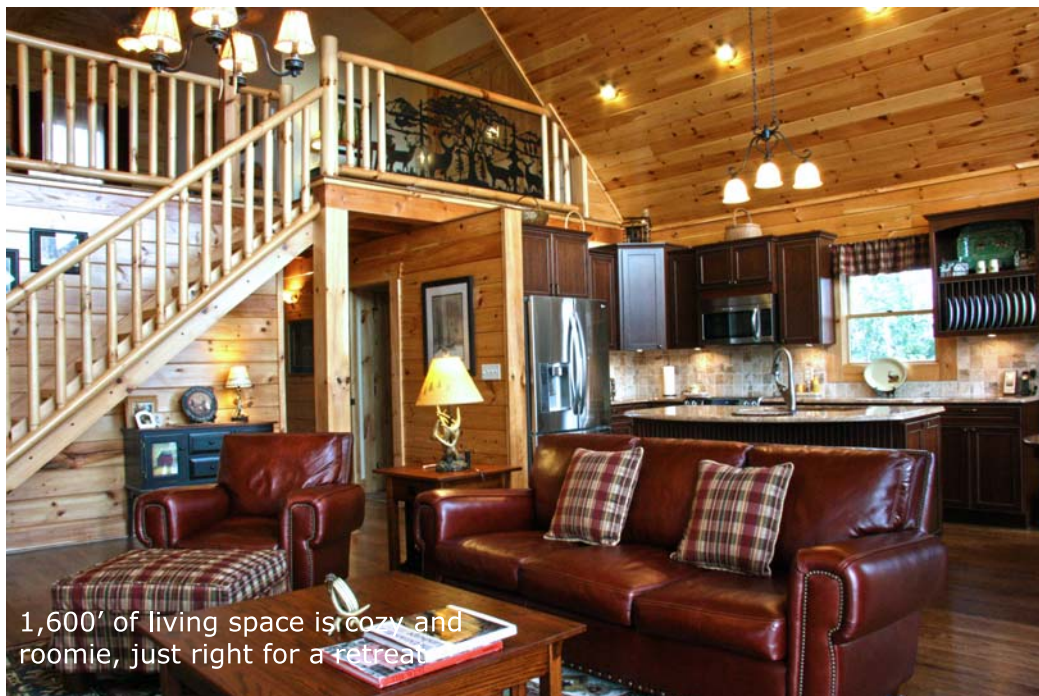
**Exciting. Warm. Comfortable. That's how Richard and Linda Hesse describe their new Honest Abe log home nestled in the foothills of the Carolina Blue Ridge Mountains.**

"We have built homes before, but this one is totally different," Richard Hesse said.

Originally from the historic town of Elka Park, N.Y., the Hesses who live in Nokomis, Fla., knew exactly what they expected from their log home mountain retreat.

"We wanted a good view with a lot of windows," Richard said. "We didn't want a big house, but we wanted an open balcony to look out."

After considering various locations, the couple chose Grandview Peaks Subdivision, Nebo, N.C., a place they'd only seen online but confess they fell in love with the moment they passed through the gates. They had already been researching and comparing



1,600' of living space is cozy and roomie, just right for a retreat.

log home companies but soon chose Honest Abe.

"I'm a preferred log home provider in the development," explained Darlene Dawson, owner of Bear's Den Log Homes, an Honest Abe independent dealership in Newton, N.C. "Richard and Linda requested information, and I sent a packet and followed up with a call. "

Darlene also shared lender information and introduced them to Steve Wallin of Custom Homes of Asheville, a builder who is also an Honest Abe independent dealer.

"We had considered another company, but we were more comfortable with Honest Abe Log Homes," Richard said. "We were quick about it. We decided on our floor plans in six weeks and on a builder in six weeks."

That builder was Steve Wallin.



Richard and Linda Hesse

A priority for the Hesses was a breathtaking view





Darlene said that she worked closely with Steve to help Linda and Richard design the house they envisioned. The Honest Abe Highlander plan was modified to incorporate the Hespes' must-have features.

Construction was completed in less than five months. Situated on a one-acre lot, the resulting 1,600 square-foot, three-bedroom house features the perfect balcony and windows for enjoying a 25-mile view.

"We love it," Richard said, also expressing their satisfaction with Darlene's guidance throughout the process. "We're very pleased, still pleased. She stayed with us right up to the end, helping with everything."

Richard said his favorite space is the great room, while Linda favors the craft room, where she creates gifts for family and friends. They both love the big glass windows and the loft. They've enjoyed making decorating choices and even had Amish furniture custom crafted for the house. Richard offered advice for others dreaming of their own custom log home.

"Don't worry about your original plan being perfect," he said, adding, "Things change anyway. Just do it and get it done."

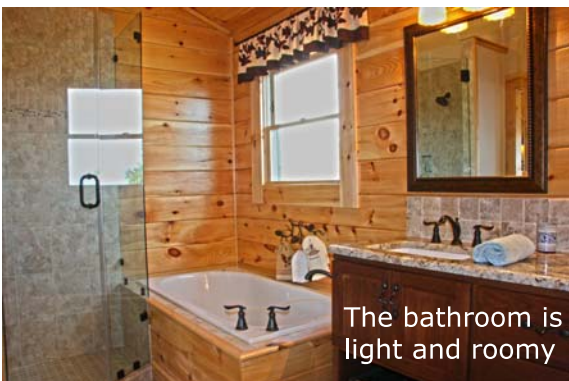


Richard loves the living room's open design

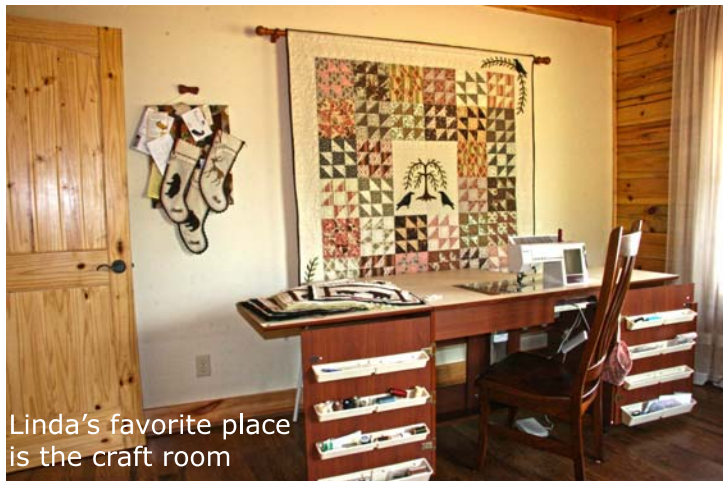


A wraparound porch makes relaxing easy

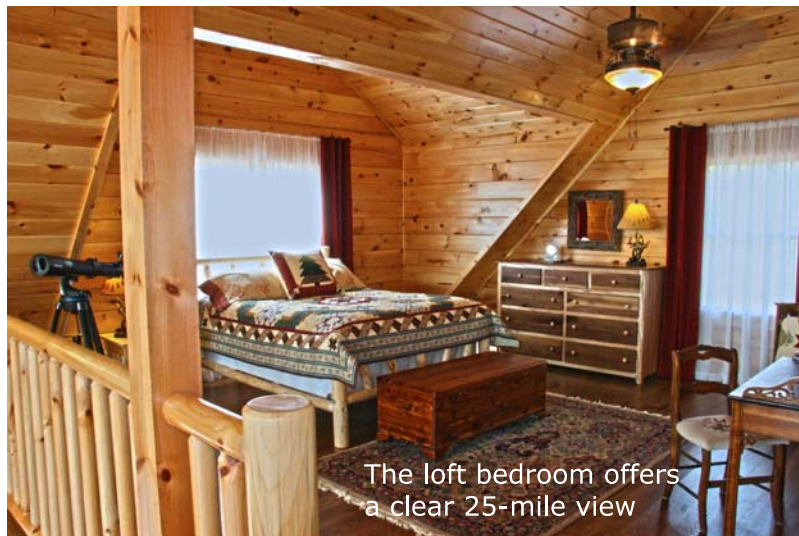
View an extensive gallery of Hesse project photos, including delivery and construction details, by visiting **Bears Den Log Homes LLC.** on Facebook



The bathroom is light and roomy



Linda's favorite place is the craft room



The loft bedroom offers a clear 25-mile view